

Ultimo

LUXURY VINYL TILES



MADE IN BELGIUM



Content

ULTIMO

#01	Introducing Ultimo	#05	Perfect finish
	p. 4		p. 12
#02	Why choose Ultimo?	#06	Looks
	p. 7		p. 14
#03	A performance multi-layered floor	#07	Technical specifications
	p. 8		p. 33
#04	Installation	#08	Meet Unilin Flooring
	p. 10		p. 34

Chapman Oak 24245

#01

Introducing

ULTIMO

Full of benefits that make them easy to live with, Luxury Vinyl Tiles are a popular choice in today's homes. The durable vinyl planks and tiles are moisture-resistant and provide a reliable and stylish flooring solution. Developed and made in Belgium, Ultimo's seven layer construction brings comfort, softness and warmth with quality and durability for any room.

Supported by a team of Belgian flooring specialists we go the extra distance to create the ultimate LVT collection. That's why Ultimo has a wide range of authentic wood and tile effects in shades that bring an original and natural look.

“

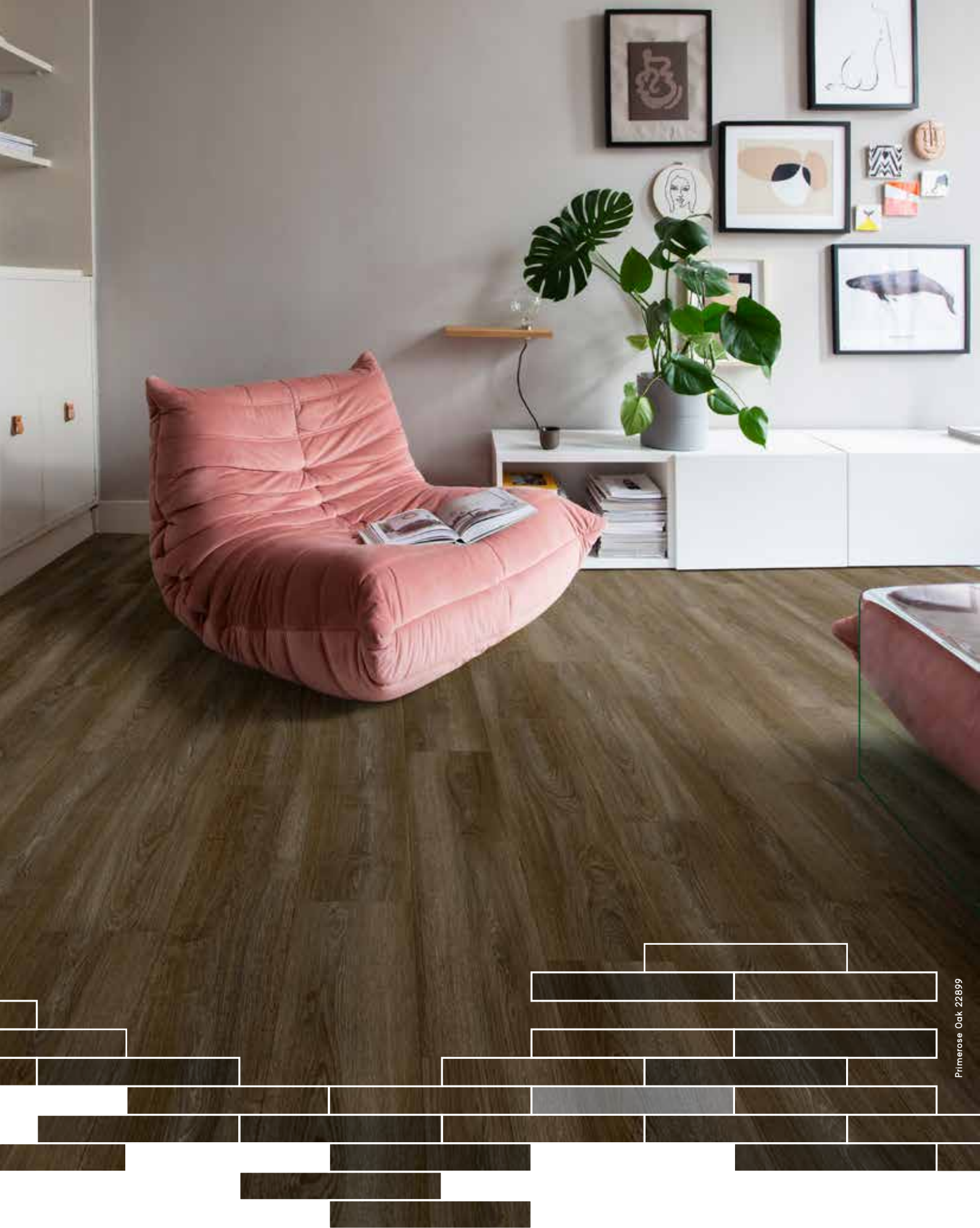
*Ultimate in performance, these
Belgian-made floors are a delight to the eye.*

”



Cement Stone 46983





Primerose Oak 22899

#02

Why choose Ultimo?

THE MANY BENEFITS OF ULTIMO

Soft, warm and quiet, Ultimo is a floor that's sure to make everyone feel comfortable. What's more, its long-lasting finish is wonderfully simple to look after.



Belgian quality

Every Ultimo floor is made in Belgium for a floor of true quality. Its multi-layer construction is strong, stable and resistant to temperature changes. This means a floor that's ready for home (class 23) and even commercial (class 33) use.



Authentic beauty

With a design and finish that are close to nature, Ultimo stays faithful to the beauty of wood and stone. With up to 80 different planks in each design, this floor gives every room an authentic look.



Easy comfort

Choosing Ultimo means enjoying a floor that's quickly installed and easy to look after. Moreover its practicality doesn't come at the expense of a soft underfoot feel, warmth and an ability to soak up sound: Ultimo makes any room feel more comfortable.

A performance multi-layered floor

HOW IS ULTIMO MADE?

Our R&D and production teams in Belgium are always looking for ways to make better floors. Ultimo is a result of this collective effort. Developed and manufactured in-house, it harnesses the very best flooring technology available today. Showcasing the innovation that runs through Unilin Flooring, the compact multi-layer construction delivers powerful performance. Scratch-resistant, stainproof and with top class dimensional stability, it's a floor that's made to withstand life, day in and day out.

Let's look at Ultimo's multi-layer construction in a little more detail:



1 Protective Superguard® for ease of living



A protective PU lacquer, Superguard®, gives Ultimo its scratch-resistance and an ability to fight off stains. Standing up to daily life, pet-proof and easy to maintain, Superguard® makes sure that Ultimo's authentic designs stay looking like new.

4/6 Double glass-fibre for a stable floor



The patented dual glass-fibre construction is responsible for Ultimo's class-leading stability. Keeping the floor locked to the ground, regardless of temperature, these two layers give the strength needed for bathrooms, garden rooms and underfloor heating, and allow it to be installed on a self-adhesive underlay.

2 A reliable wear layer



The 0.55 mm thick wear layer makes sure that Ultimo's planks and tiles are tough enough for intense daily use and meet the standards of class 23 and 33. The wear layer is made in-house for reliability and quality and that's why we back Ultimo with a long 25-year residential warranty.

5 A durable compact core



Crucial to Ultimo's durability, the high-strength compact core provides indentation resistance. So, no matter how many times you rearrange your room, Ultimo stays in great shape. What's more, this core is made from up to 46% recycled content from both production waste and externally collected material.

3 A design layer that's close to nature



Ultimo comes with beautiful, exclusive designs that you can't find anywhere else. By adding a bevel on the edges, it enjoys a more authentic natural look. What's more, it has a large pattern and planks and tiles are cleverly cut to avoid obvious repeats. This gives Ultimo a look that's closer to nature.

7 Backing layer with extra grip



Connecting Ultimo to the prepared subfloor beneath, the backing layer's embossed 'grip' texture gives the adhesive extra hold. We've also included a direction arrow, so you know exactly the right way to install an authentic looking floor.

GLOSSARY



Design



Strength



Eco-friendly, durable



Dimensional stability



Scratch & stain



Moisture protection

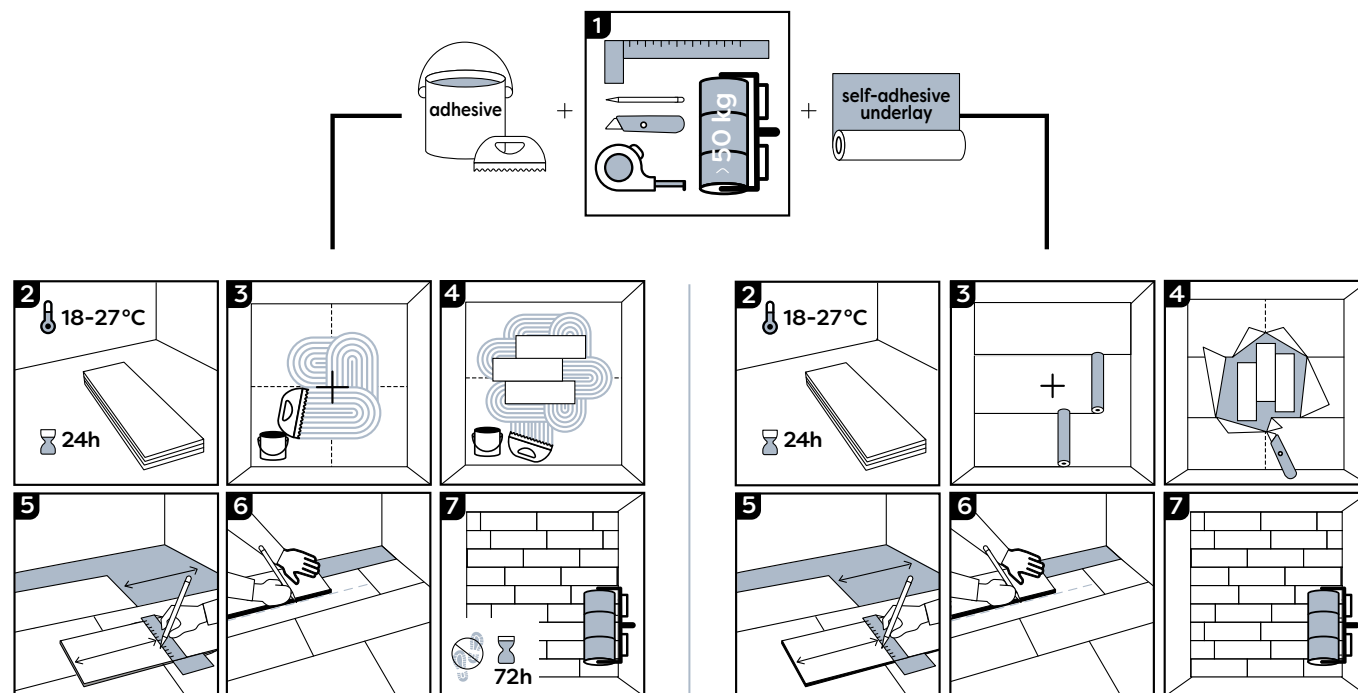
VINYL DRYBACK SYSTEM

Easy installation

Ultimo is remarkably effortless to install thanks to its flexibility, that means it can be easily cut to shape. Its world-class dimensional stability allows you to choose your preferred installation method. The classic way with adhesives adhered to the subfloor, or a quick and innovative solution with a self-adhesive underlay Flex Pro Eco.

The classic way

The smart way



PS adhesive
SFVADHPS(-)

Qualitative adhesive for bonding LVT flex floors onto sound and suitably dry subfloors. Available in 5 kg and 15 kg buckets.



HT adhesive
SFVADHHT(-)

Adhesive for rooms with big temperature fluctuations. Available in 5 kg and 15 kg buckets.



Flex Pro Eco
SFVUDLFLEXPROECO

A self-adhesive, recyclable underlay offering a quick installation, minimal subfloor prep and excellent sound insulation. - 6.5m²



Floor Prep
SFVFLOORPREP

An installation on tiles and not sure about the joints? Use Floor Prep, a ready to use levelling compound for smoothing tile joints (>2mm) before installing the Flex Pro with your floor. - 5kg

THE SMART WAY

Flex Pro Eco

The Flex Pro Eco is a self-adhesive vinyl underlay for floating installations, so no adhesive is needed. The underlay allows for quick installation with minimal subfloor prep and offers excellent sound insulation. It is eco-friendly and can be recycled with the vinyl floor.



Superior sound insulation
Excellent for rooms below and adjacent



Sustainable choice
Easily removeable
Revolutionizing vinyl dryback recycling



No adhesives needed
No subfloor preparation



Recover program
Classic installed vinyl dryback cannot be recycled due to glue contamination. With our new method, we're able to recycle both the floor and underlay together. Be a part of our effort to create new floors with our Recover program (see p35).

Tiles? No problem

Install the Flex Pro Eco over existing tile joints of up to 2mm.

Wider joints? Use the Floor Prep

- Ready to use
- Easy to apply
- Hardens quickly (1h)
- No primer needed



Perfect finish

ACCESSORIES TO EASE YOUR MIND

For the perfect finish, you need the perfect range of accessories. From finishing tools, to skirtings and profiles, SmartFinish® has everything you need. What's better still, they are all made to the same exacting standards as your Ultimo floor.

Skirtings



Colour matched skirtings

Go for a colour-matched finishing with our high quality SmartFinish skirtings with MDF core. Available in 3 shapes in a matching design for your floor.

- Parquet skirting - SFPSK(-)
2400 x 14 x 77 mm
- Standard skirting - SFSK(-)
2400 x 12 x 58 mm
- Scotia - SFSCOT(-)
2400 x 17 x 17 mm

White & paintable skirtings

Paint these skirtings in the same colour as your walls or simply leave them white thanks to their multifunctional topcoat.

- Paintable Parquet skirting - SFPSKPAINT
2400 x 14 x 77 mm
- Paintable Standard skirting - SFSKPAINT
2400 x 12 x 58 mm
- Paintable Scotia - SFSCOTPAINT
2400 x 17 x 17 mm
- Waterproof paintable skirting large - SFHSK80PAINT
2400 x 15 x 80 mm

Profiles



Stair profile
inner corner SFVSTPINCLICK
outer corner SFVSTPOUTCLICK

Available in silver.
2400 x 40 x 26 mm



End profile
SFVENP(-)

Available in silver, black, gold and taupe.
2000 x 18 x 6 mm

Finishing tools



Design strips
SFDESIGN(-) - 10 strips of 5m

Personalise your floor with these individually coloured strips.
Available in 11 colours.



Joint sealant
SFSEAL(-)1000 - 1 kg

Fill small joints to protect your floor from dirt and moisture.
Available in black, grey, brown, beige and white.



Smart glue
SFGLUE290

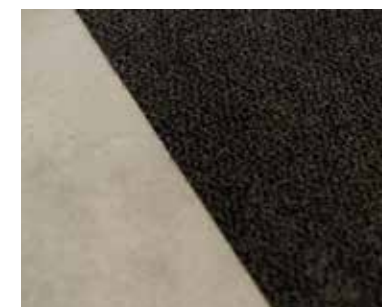
Multi-purpose glue that ensures adhesion of skirtings to all materials and substrates. Average usage: 1 tube for 15m of skirtings.

Maintenance



Floor cleaner
SFCLEANECO1000 - 1000 ml

Thoroughly cleanses your floor, protects the surface and helps to preserve its original appearance. Moreover, it's a biodegradable product, so you're making a sustainable choice.



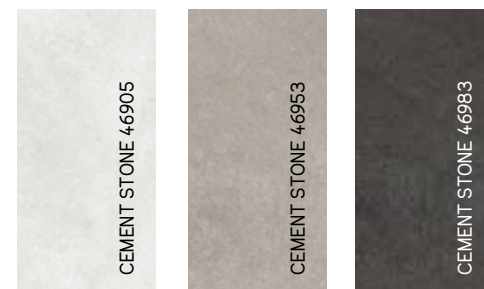
Entrance mats
SFDOORMAT(-)

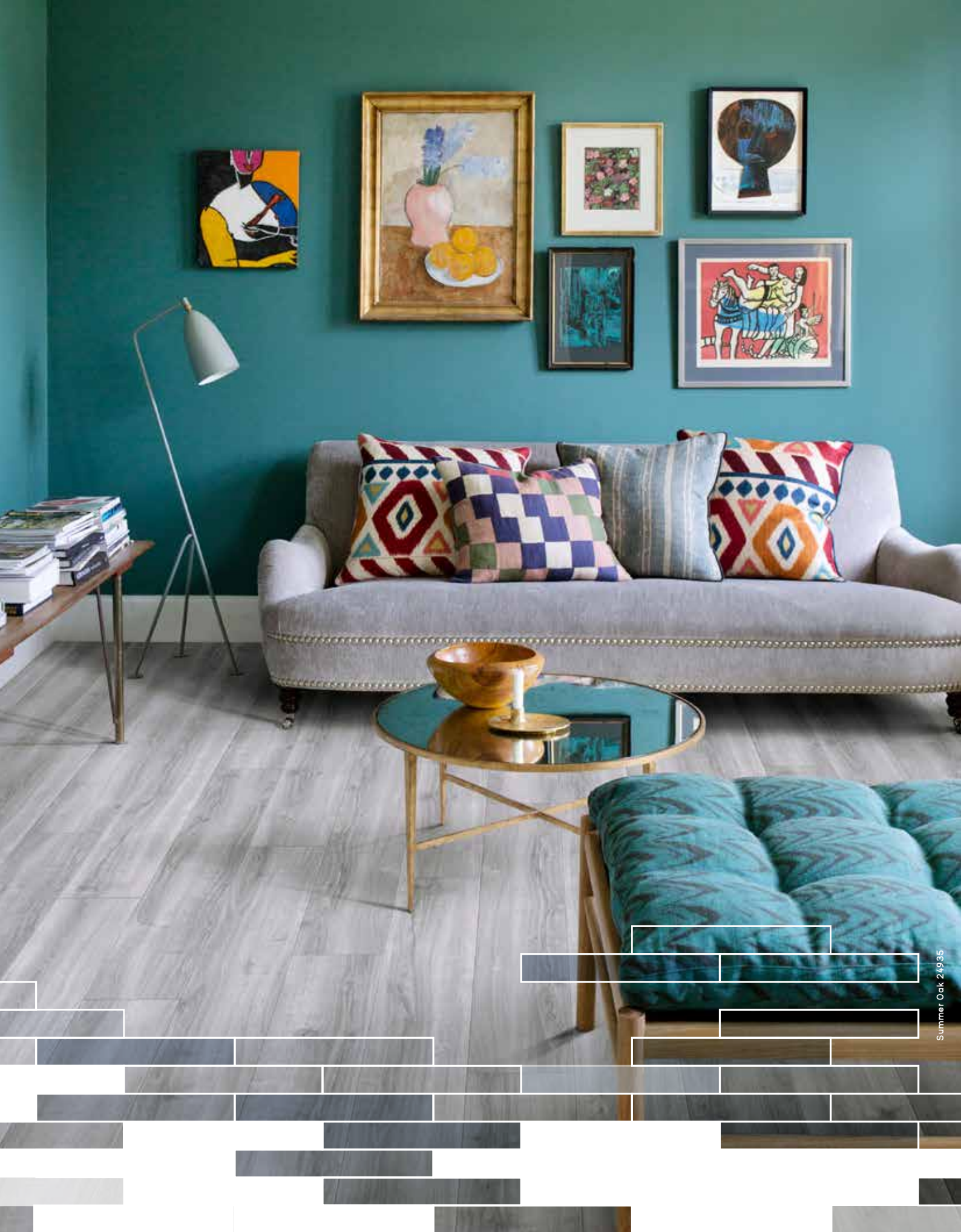
Qualitative doormat that removes large amounts of dry dirt as well as absorbs water and oil-based moisture.
Available in 3 colours and 2 sizes.

Looks

CLOSE TO NATURE

Designed in Belgium from exacting studies of original materials, Ultimo captures the nuance and variety of nature, presenting a sophisticated range of decors. A refined 4-sided bevel and a detailed emboss make it even more realistic. A wide range of natural wood looks in natural colours and realistic stone looks ensure a sophisticated look that will fit in any interior.





Summer Oak

The bright natural structures of Summer Oak reflect the natural light throughout all rooms, making your interior feel larger and airier. A design of timeless beauty and versatility.



24935



24867



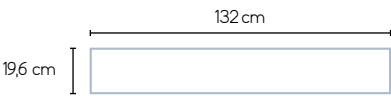
24820



24244



24219



Thickness
2.50mm

Wear layer
0.55mm

Chapman Oak

A traditional oak floor that combines timeless elegance and robustness. A valuable addition to any home.



24913 24321 24126 24238 24245



Thickness
2.50mm

Wear layer
0.55mm





Primerose Oak

This oak floor creates a sleek and consistent look, adding a sense of luxury and sophistication to any room.



22851



22928



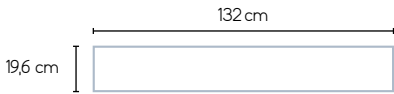
22455



22209



22899



Thickness
2.50mm

Wear layer
0.55mm

Bear Oak

This design is characterized by its natural look and lived-in finish, with saw cuts creating a distinctive, rough edge along the planks.



24921



Thickness
2.50mm

Wear layer
0.55mm





French Oak

The timeless character of this design, without knots or cracks, brings a sense of ease and calmness to your room. It makes it a versatile option that complements both rural charm and urban sophistication.



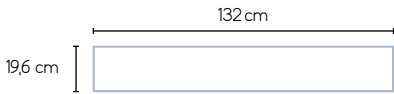
22230



22227



22949



Thickness
2.50mm

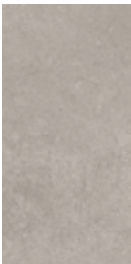
Wear layer
0.55mm

Cement Stone

A concrete floor is a modern and allround choice that is becoming increasingly popular in a wide range of interiors. It offers the perfect base to combine with a multiple of aesthetics.



46983



46953



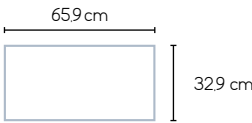
46905

Dorato Stone

A metal plate floor instantly imparts an industrial look to your space. Its sleek and shiny surface makes a bold statement.

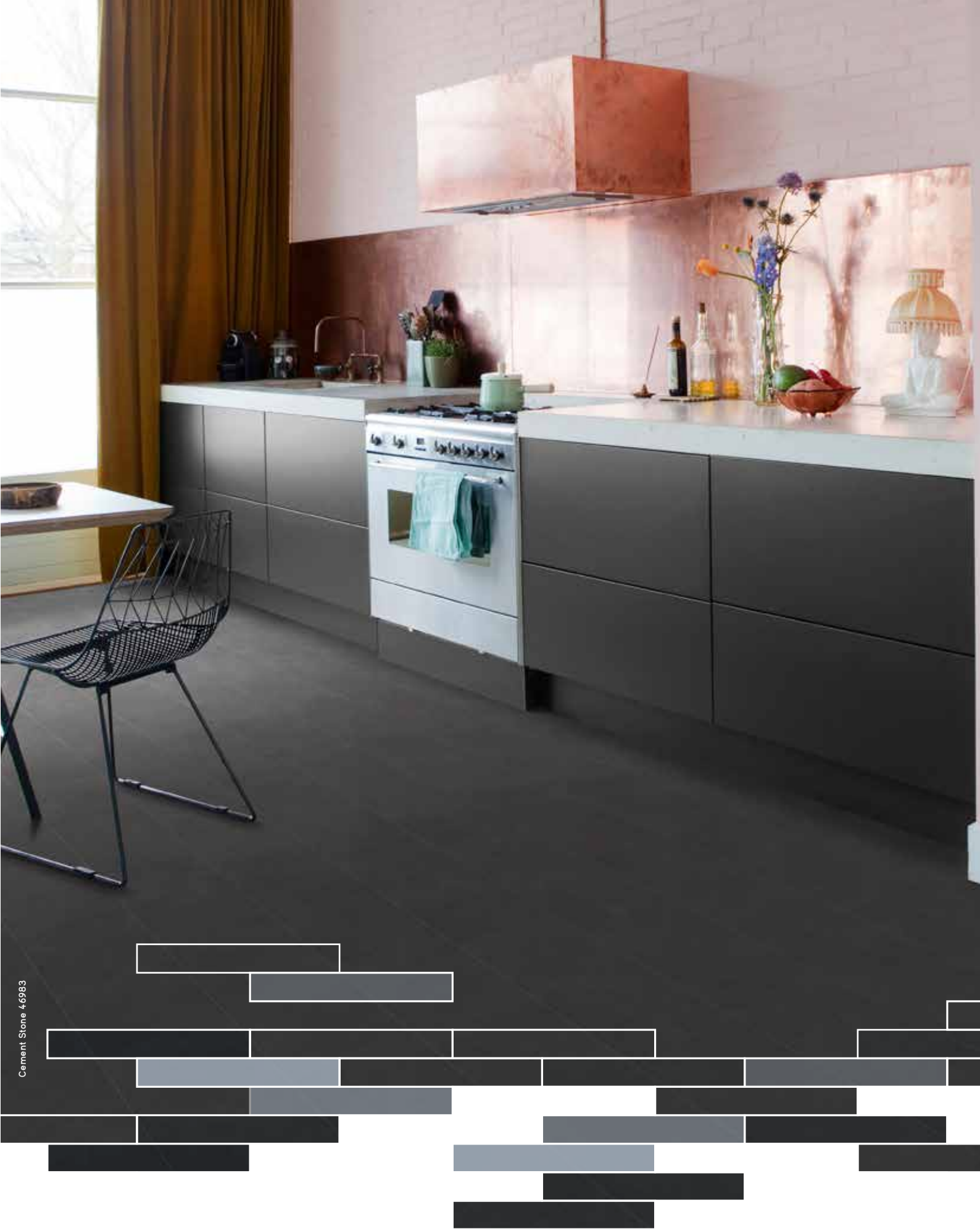


46862



Thickness
2.50mm

Wear layer
0.55mm





Trasimeno

A terrazzo decor that offers a balanced, fresh, and modern look to any floor and interior. Its unique blend of marble, quartz, granite, and glass chips creates a dynamic pattern that adds texture and interest. The harmonious mix of colours and materials provides a contemporary yet timeless appeal, enhancing the aesthetic of both classic and modern spaces.



46119



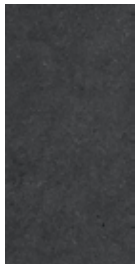
46906

Vulcan Stone

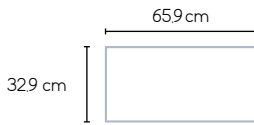
A tile with a metallic finish is a striking choice for those seeking a modern and luxurious look. Its subtle reflection adds a sense of depth and richness to any space.



46996



46998



Thickness
2.50mm

Wear layer
0.55mm





#07



TECHNICAL SPECIFICATIONS

PRODUCT INFORMATION

Productnorm	EN ISO 10582	
Level of use	EN ISO 10874	23 - 32 - 42*
Total thickness	EN ISO 24346	2,5 mm
Wear layer	EN ISO 24340	0,55 mm
Wear layer PUR treatment		Superguard Pro®
Total weight g/m²	EN ISO 23997	4063 g/m³

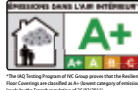
SIZE & PACKING

Planks	EN ISO 24342	19,6 x 132,0 cm
Box planks	14 pcs/box	3,622m²/box
Tiles	EN ISO 24342	32,9 x 65,9 cm
Box tiles	16 pcs/box	3,469m²/box

TEST RESULTS

Inflammability	EN 13501-1	Bfl-S1
Squareness & straightness	EN ISO 24342	≤ 400 mm: ≤ 0,25 mm > 400 mm: ≤ 0,35 mm
Slip resistance	EN 13893	DS
Slip restraint	EN 16165:2021-10 Annex B	≥ R9
Residual indentation	EN 24343-1	Average result measured: 0,05 mm
Furniture leg resistance	EN 424	No damage
Curling	EN ISO 23999	Norm: ≤ 1 2 l mm Result: ≤ 2 mm
Dimensional stability	EN ISO 23999	Norm: ≤ 0,25 % Average result measured: ≤ 0,05 %
Heat insulation	EN ISO 10456	0,25 w/(m.K)
Thermal resistance R	EN 12667	0,01 m².K/W
Formaldehyde group	EN 717-1	E1
Acoustic insulation	EN 10140-1/3	Δ Lw ≥ 4 dB
Acoustic insulation + Flex Pro underlay	EN 10140-1/3	Δ Lw ≥ 8 dB
Castor chair resistance	EN 425	No damage to wearlayer, no delamination
Stain resistance	EN 438-2	Grade 5
Light fastness	ISO 105-B02:2014	≥ 6
Underfloor heating		Suitable, max 27°C
Warranty (year)		25 Residential 10 Commercial*

The warranty covers manufacturing defects and premature wear in the event of normal use.
* Only applicable for a fully glued installation



#08

M E E T

Unilin Flooring

Unilin Flooring is a global player in the making of vinyl, laminate, wood and carpet tiles. We're the specialist in vinyl flooring within the Mohawk Group, world's largest flooring company. Innovation, entrepreneurship and passion push us to improve people's quality of life by creating better spaces.



On site wind farm to produce our own clean electricity in Belgium

Sustainable thinking

With the group-wide One Home sustainability strategy, we're engaged in building a more sustainable future for our planet, customers and employees. So that we are ambitious about our progress, we keep to the guidelines of the Science Based Targets initiative (SBTi), committing that by 2030 we will have reduced our greenhouse gas emissions by 42%. Our **four pillars** will realise this significant reduction in emissions for the production of our Luxury Vinyl Tiles:

Renewable energy & efficiency



At our Belgian LVT production site, production is powered by three on-site wind turbines. The machinery is efficiently cooled by air and water from the Scheldt river, which is more energy efficient. We've also been harnessing the power of the sun which means that already 60% of need is powered by renewable energy.

Local production

Our LVT floors are produced in our own cutting-edge production units in Belgium and we source most of our raw materials from within Europe. This localised approach not only guarantees product performance and quality by controlling every step of production: it also helps to minimise the impact of transportation.



Internal closed loop recycling



We recycle over 99% of our own waste materials through our own internal processes. By adopting our own circular ecosystem, we keep waste materials out of landfill and incineration.



External recycling

Recycling flooring at the end of its life is a complex challenge due to different materials and contamination by adhesives. At Unilin Flooring, we're working hard on solving this. We're pioneering in adding externally recycled content to our vinyl flooring. Besides that, through the Recover program we are partnering up with experts to set up incoming streams of post-industrial and post-consumer vinyl.



Recover
UNILIN TAKE BACK PROGRAM



Scan the QR-code to read more about 'One Home'

*Compared to 2020

