

Ulyssa

Acoustic

ENGINEERED VINYL FLOORING



MADE IN BELGIUM



Content

ULYSSA ACOUSTIC

- #01** Introducing Ulyssa Acoustic
p. 4
- #02** Why choose Ulyssa Acoustic?
p. 7
- #03** A performance multi-layered floor
p. 8
- #04** Easy installation
p. 10

- #05** Perfect finish
p. 12
- #06** Effortless maintenance
p. 14
- #07** Looks
p. 16
- #08** Technical specifications
p. 31
- #09** Meet Unilin Flooring
p. 32

Chapman Oak 242/5

#01

Introducing

ULYSSA ACOUSTIC

Full of benefits that make them easy to live with, Engineered Vinyl Floors (EVF) are a popular choice in today's homes. The durable vinyl planks are moisture resistant and provide a reliable and stylish flooring solution. Developed and made in Belgium, Ulyssa Acoustic is made up of eleven layers with each one tuned to bring a particular characteristic.

This brings a strong and durable floor, fit for any room.

Supported by a team of Belgian flooring specialists, we go the extra distance to create the ultimate Engineered Vinyl Floors (EVF) collection. That's why Ulyssa Acoustic has a wide range of authentic wood and tile effects in shades that bring an original and natural look in every style of home.

“

Made in Belgium, this high-performance floor is comfortable, durable and a delight to the eye.

”



Primrose Oak 22455



#02

Why choose Ulyssa Acoustic?

THE MANY BENEFITS OF ULYSSA ACOUSTIC

Engineered strength that is not compromising on beauty nor comfort. What's more, its long-lasting finish is wonderfully simple to look after.



Cleverly engineered in Belgium

Ulyssa Acoustic is made in Belgium to be a floor of true quality. Its multi-layer construction is unique and offers the overall best performing product on the market. It is exceptionally strong and the most durable and does not compromise on comfort. This means that Ulyssa Acoustic is a floor ready for home (class 23) and commercial (class 33) use.



Authentic beauty

With a design and finish that are close to nature, Ulyssa Acoustic stays faithful to the beauty of wood and stone. With up 8 different designs in multiple colors, this floor gives every room an authentic look.



Fast and easy installation

Choosing Ulyssa Acoustic means enjoying a floor that is installed fast and easy. This floor has the proven Uniclic® click system and has integrated padding, and because of the rigidity of the planks, limited levelling preparation is required. Moreover, no sawing or machinery is required, as you can cut simply through the planks with a knife.



Acoustic comfort

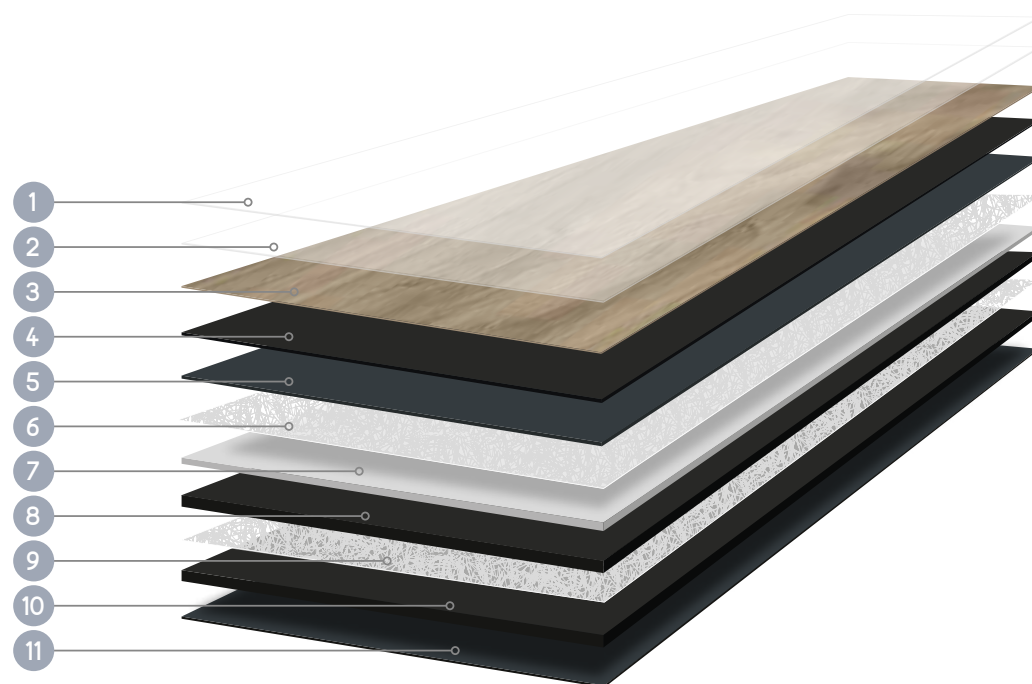
The practicality and performance of Ulyssa Acoustic doesn't come at the expense of a soft and warm underfoot feel. The acoustic layers in the core and integrated padding provide the best noticeable noise reduction, not only in the room but also for downstairs neighbours.

A performance multi-layered floor

HOW IS ULYSSA ACOUSTIC MADE?

Our R&D and production teams are always looking for ways to make better floors. Ulyssa Acoustic is a result of this collective effort. Developed and manufactured in-house, it harnesses the very best flooring technology available today. Showcasing the innovation that runs through Unilin Flooring, the multi-layer construction delivers powerful performance. It is the sum of these layers and their specific characteristics that makes this floor truly unique and superior to other - less engineered - rigid flooring products in the market.

Let's take a look at Ulyssa Acoustic's multi-layer construction in a little more detail:



1 Protective Superguard® for ease of living



A protective PU lacquer, Superguard®, gives Ulyssa Acoustic a good scratch resistance. We use a special dual lacquering technique that results in the most beautiful matte look without glossy spots. Resilient against the challenges of daily life and easy to maintain, Superguard® makes sure that Ulyssa Acoustic's close to nature designs stay looking like new.

2 An enduring wear layer



Ulyssa Acoustic's wear layer ensures it's safe from the wear and abrasion of everyday life. It's part of the reason why Ulyssa Acoustic brings the most powerful and lasting floor finish in any room and why it comes with a long 25-year residential warranty.

3 An authentic design layer that's close to nature



Ulyssa comes with beautiful, exclusive designs that you can't find anywhere else, while a genuine bevelled edge leaves each plank beautifully defined. A pattern repeat of 2.20 m x 1.50 m ensures a very high variation within the planks giving the installed floor a realistic look without visible repetition of the pattern.

4 Acoustic layer



The acoustic layer assures a very low sound reflection and unique acoustic properties in two directions: upwards by reducing sound in the space and downwards by reducing transit noise between levels. Besides the noise reducing properties, the walking sound on Ulyssa Acoustic floor is experienced to be the most pleasant in comparison to other rigid floors.

5 Strong compact layers



The first compact layer assures strength and protects the inner lightweight body. It offers excellent indentation properties and prevents furniture or high heels from making a permanent impression. The second compact layer offers excellent non-telegraphing properties and prevents underlying irregularities from penetrating. It makes installation on an uneven underfloor very easy.

6 Double glass-fibres for a stable floor



The patented dual glass-fibre construction is responsible for Ulyssa Acoustic's class-leading stability. Keeping the movement to the bare minimum, it makes sure the floor is locked to the ground, regardless of temperature.

7 Durable lightweight body layers



These inner layers ensure Ulyssa Acoustic is rigid and strong without being heavy and therefore easier to handle and to transport. Up to 30% of their material is recycled content, guaranteeing zero industrial waste.

11 Premium integrated pad



This integrated, fully recyclable pad helps with installation and eliminates the cost and time of a separate underlay. Made from materials specifically selected for the perfect balance of strength and acoustics, the pad also ensures that distracting noise is reduced for a more comfortable atmosphere, not only for you but also for your downstairs neighbours. Cleverly integrated to the core, the pad fully supports the click system and guarantees a floor that's made to last.

GLOSSARY



Design



Strength



Scratch & stain



Acoustic



Dimensional stability



Eco-friendly, durable



Moisture protection

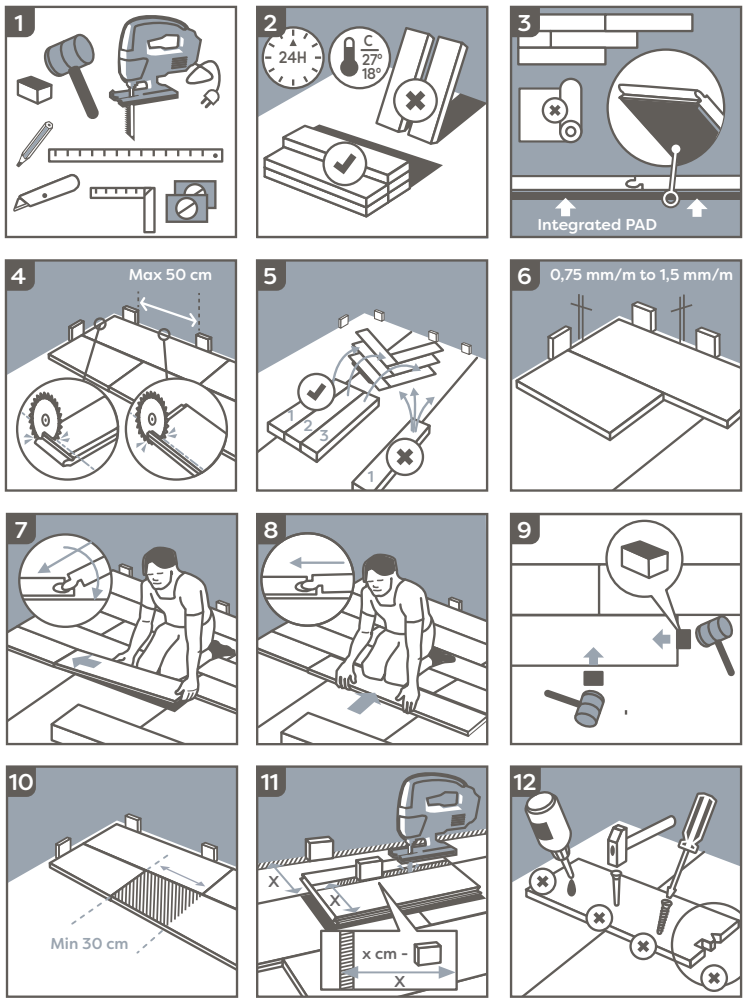


#04

Easy installation

RIGID CLICK SYSTEM

Ulyssa Acoustic's advanced construction and reliable Uniclic® locking system assure a smooth installation for a lasting result. Thanks to our integrated pad, it eliminates the need for a separate underlay.



For detailed installation instructions
please scan the QR code



Installation kit

SFTOOL

Set with a crowbar, tapping block and 20 spacers to easily click rigid floor planks together and provide perfect expansion gaps.



Smartglue

SFGLUE290 - 290 ml

Multi-purpose glue that ensures adhesion of skirtings to all materials and substrates. Average usage: 1 tube for 15 m of skirtings.

Perfect finish

ACCESSORIES TO COMPLETE THE LOOK

For the perfect finish, you need the perfect range of accessories. From skirtings and profiles to finishing tools, Smartfinish has everything you need. What's better still, they are all made to the same exacting standards as your Prisma Acoustic floor.

Skirtings



Colour-matched skirtings

- **Scotia** - SFSCOT(-)
2400 x 17 x 17 mm
- **Parquet skirting** - SFPSK(-)
2400 x 14 x 77 mm
- **Standard skirting** - SFSK(-)
2400 x 12 x 58 mm

Clickable* paintable skirtings

- **Paintable Small skirting** - SFSKCLICKPAINT
1260/2400 x 12 x 50 mm
- **Paintable Medium skirting** - SFPSKCLICKPAINT
1260/2400 x 12 x 70 mm
- **Paintable Large skirting** - SFTSKCLICKPAINT
1260/2400 x 14 x 100 mm

Paintable skirtings

- **Paintable Scotia** - SFSCOTPAINT
2400 x 17 x 17 mm
- **Paintable Parquet skirting** - SFPSKPAINT
2400 x 14 x 77 mm
- **Paintable Standard skirting** - SFSKPAINT
2400 x 12 x 58 mm
- **Waterproof paintable skirting large**
SFHKS80PAINT
2400 x 15 x 80 mm

Clickable* white skirtings

- **White Small skirting** - SFSKCLICKWHITE
1260/2400 x 12 x 50 mm
- **White Medium skirting** - SFPSKCLICKWHITE
1260/2400 x 12 x 70 mm
- **White Large skirting** - SFTSKCLICKWHITE
1260/2400 x 14 x 100 mm

*Clickable skirtings

Our new clickable skirtings are developed to make installing smoother and the finish seamless.

Easy to install

Thanks to our internally developed Uniclic® system skirting installation has never been easier and quicker. No tools needed, just click and go.

Seamless finish

The ingenious design ensures the joints of your skirtings will meet seamlessly without any unsightly gaps.

Profiles

Colour-matched profiles



Incizo 4-in-1 profile

SFVINCP(-)
2000 x 45 x 8 mm

High-quality profile with 4 applications in 1 single product. Simply cut the Incizo basic profile to the desired shape with the supplied Incizo knife. Available in a matching design for your floor.



Adapter profile

Connect two floors of different heights.



Expansion profile

Connect two floors of the same height.



End profile

Finish your floor along walls or windows.



Transition profile

Create a nice transition between your vinyl floor and other flooring types.

Metal profiles



Slim and elegant profiles in wear and scratch resistant aluminium to finish of expansion gaps. Available in silver, coffee, clay, champagne and black.



Adapter profile

Connect two floors of different heights.
NEVADPSILV / COFF / CLAY
/ CHAM / BLACK
2000 x 38 x 7 mm



Expansion profile

Connect two floors of the same height.
NEVEXPSILV / COFF / CLAY
/ CHAM / BLACK
2000 x 34 x 7 mm



End profile

Finish your floor along walls, windows or carpets.
NEVENPSILV / COFF / CLAY /
CHAM / BLACK
2000 x 24 x 7 mm



Entrance mat Ash grey

Effortless maintenance

ACCESSORIES TO EASE YOUR MIND

To minimize cleaning and to protect your floor, install a doormat in rooms that are accessed from outdoors. But don't worry if your floors gets the marks of life, our maintenance products can fix it!

Maintenance



Entrance mats
SFDOORMAT(-)
Qualitative doormat that removes large amounts of dry dirt as well as absorbs water and oil-based moisture. Available in 3 colours and 2 sizes.



Floor cleaner
SFCLEANECO1000 - 1000 ml
Thoroughly cleanses your floor, protects the surface and helps to preserve its original appearance. Moreover, it's a biodegradable product, so you're making a sustainable choice.



Spot cleaner
SFSPOTCLEAN – 250 ml
Spot cleaner to remove the most persistent stains such as permanent marker, paint, red wine and more.

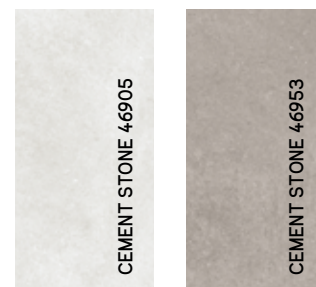


Cleaning kit
SFSPRAYKIT
Mop holder with refillable water tank to easily moisten and mop your floor. Also includes a washable microfiber mop* and 1L of Floor cleaner.
* Also available separately

Looks

CLOSE TO NATURE

Designed in Belgium from exacting studies of original materials, Ulyssa Acoustic captures the nuance and variety of nature, presenting a sophisticated range of decors. A refined 4-sided bevel and a detailed emboss make it even more realistic. A wide range of authentic wood looks in natural colours and realistic stone looks ensure a sophisticated look that will fit in any interior.





Summer Oak 24244

Summer Oak

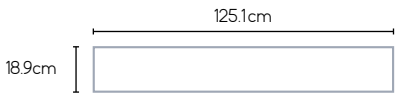
The bright natural structures of Summer Oak reflect the natural light throughout all rooms, making your interior feel larger and airier. A design of timeless beauty and versatility.



24244



24820



UNICLIC®

Thickness 6.00 mm (incl. integrated padl)



Chapman Oak

A traditional oak floor that combines timeless elegance and robustness.
A valuable addition to any home.



24126

24245



UNICLIC

Thickness
6.00mm (incl. integrated pad)





Primerose Oak

This oak floor creates a sleek and consistent look, adding a sense of luxury and sophistication to any room.



22851



22928



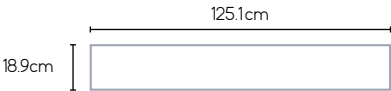
22455



22209



22899



UNICLIC®

Thickness 6.00mm (incl. integrated padl)



Bear Oak

This design is characterized by its natural look and lived-in finish, with saw cuts creating a distinctive, rough edge along the planks.



24921



UNICLIC

Thickness
6.00mm (incl. integrated pad)





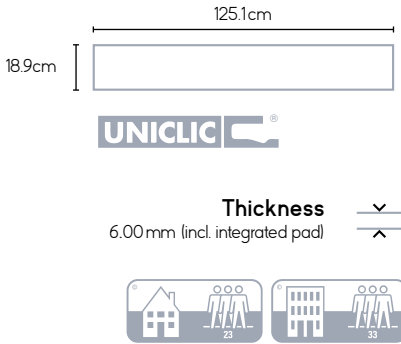
French Oak 22230

French Oak

The timeless character of this design, without knots or cracks, brings a sense of ease and calmness to your room. It makes it a versatile option that complements both rural charm and urban sophistication.



22230

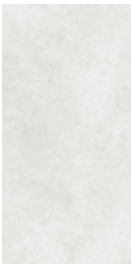


Cement Stone

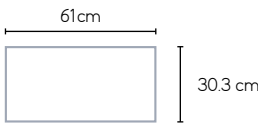
A concrete floor is a modern and allround choice that is becoming increasingly popular in a wide range of interiors. It offers the perfect base to combine with a multiple of aesthetics.



46953



46905



UNICLIC

✓ Thickness
✗ 6.00mm (incl. integrated pad)



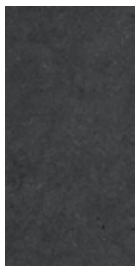


Vulcan Stone

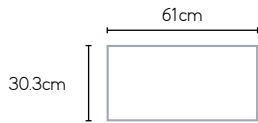
A tile with a metallic finish is a striking choice for those seeking a modern and luxurious look. Its subtle reflection adds a sense of depth and richness to any space.



46996



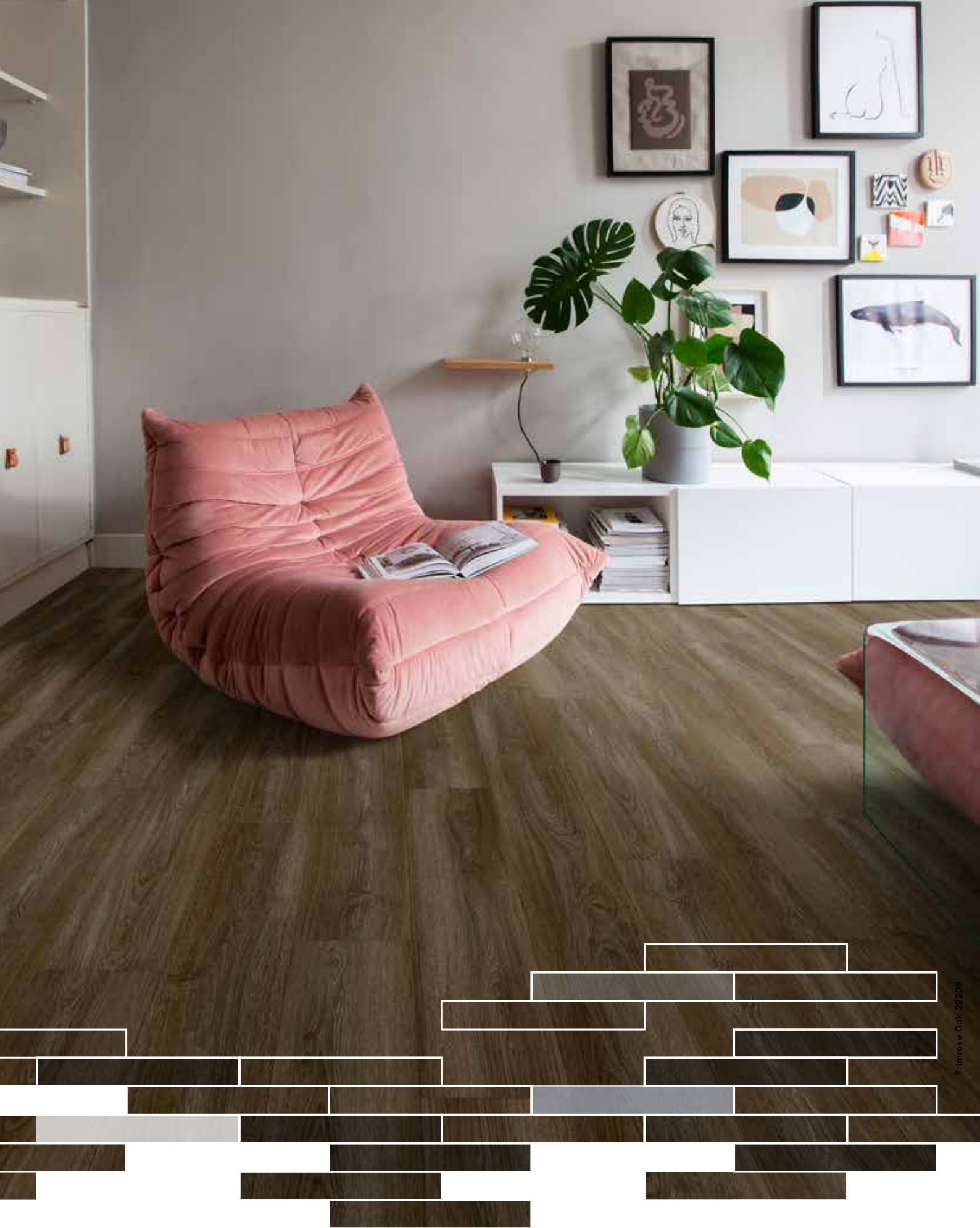
46998



UNICLIC®

Thickness
6.00mm (incl. integrated pad)





Primrose Oak 22/209

#08



TECHNICAL SPECIFICATIONS

PRODUCT INFORMATION

Productnorm	EN 16511	
Level of use	EN ISO 10874	23 - 33
Total thickness	EN 17 539	5+1 mm
Wear layer PUR treatment		Superguard Prime®
Total weight g/m²	EN ISO 23997	8109 g/m²

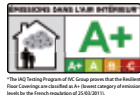
SIZE & PACKING

Planks	EN 17 539	18,9 x 125,1 cm
Box planks	9 pcs/box	2,128 m²/box
Tiles	EN 17 539	30,3 x 61,0 cm
Box tiles	10 pcs/box	1,848 m²/box

TEST RESULTS

Inflammability	EN 13501-1	Bfl-s1
Squareness & straightness	EN 17 539	≤ 400 mm: ≤ 0,20 mm l > 400 mm: ≤ 0,30 mm
Slip resistance	EN 13893	DS
Slip restraint	EN 16165:2021-10 Annex B	R10
Residual indentation	EN 24343-1	≤ 0,2 mm
Furniture leg resistance	EN ISO 16581	No visible damage
Curling	EN ISO 23999	≤ 1 2 l mm
Dimensional stability	EN ISO 23999	≤ 0,15 %
Thermal resistance R	EN 12667	0,033 m².K/W
Formaldehyde group	EN 717-1	E1
Acoustic insulation	EN ISO 717-2	Δ Lw ≥ 21 dB
Castor chair resistance	EN ISO 4918	No delamination, no disturbance
Stain resistance	EN 438-2	OK
Light fastness	ISO 105-B02:2014	≥ 6
Underfloor heating		Suitable, max 27°C
Warranty (year)		25 Residential

The warranty covers manufacturing defects and premature wear in the event of normal use.



#09

M E E T

Unilin Flooring

Unilin Flooring is a global player in the making of vinyl, laminate, wood and carpet tiles. We're the specialist in vinyl flooring within the Mohawk Group, world's largest flooring company. Innovation, entrepreneurship and passion push us to improve people's quality of life by creating better spaces.



On site wind farm to produce our own clean electricity in Belgium

Sustainable thinking

With the group-wide One Home sustainability strategy, we're engaged in building a more sustainable future for our planet, customers and employees. So that we are ambitious about our progress, we keep to the guidelines of the Science Based Targets initiative (SBTi), committing that by 2030 we will have reduced our greenhouse gas emissions by 42%. Our **four pillars** will realise this significant reduction in emissions for the production of our Luxury Vinyl Tiles:

Renewable energy & efficiency



At our Belgian LVT production site, production is powered by three on-site wind turbines. The machinery is efficiently cooled by air and water from the Scheldt river, which is more energy efficient. We've also been harnessing the power of the sun which means that already 60% of need is powered by renewable energy.

Local production

Our LVT floors are produced in our own cutting-edge production units in Belgium and we source most of our raw materials from within Europe. This localised approach not only guarantees product performance and quality by controlling every step of production: it also helps to minimise the impact of transportation.



Internal closed loop recycling

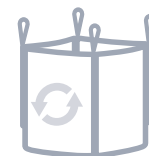


We recycle over 99% of our own waste materials through our own internal processes. By adopting our own circular ecosystem, we keep waste materials out of landfill and incineration.



External recycling

Recycling flooring at the end of its life is a complex challenge due to different materials and contamination by adhesives. At Unilin Flooring, we're working hard on solving this. We're pioneering in adding externally recycled content to our vinyl flooring. Besides that, through the Recover program we are partnering up with experts to set up incoming streams of post-industrial and post-consumer vinyl.



Recover
UNILIN TAKE BACK PROGRAM



Scan the QR-code to read more about 'One Home'

*Compared to 2020

